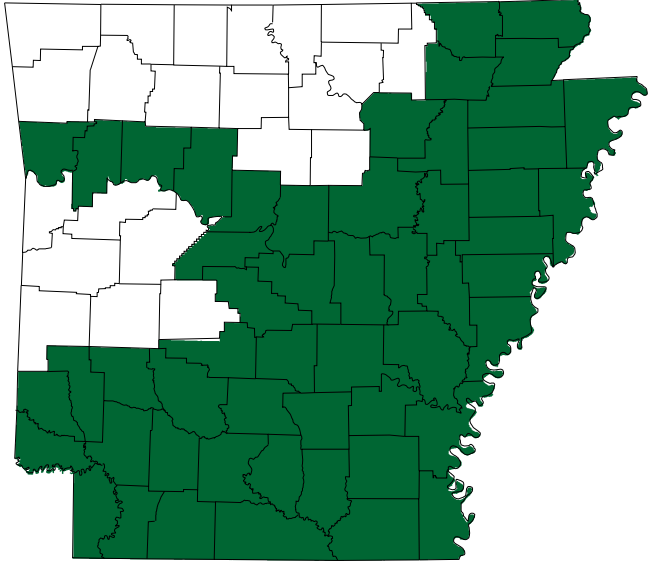
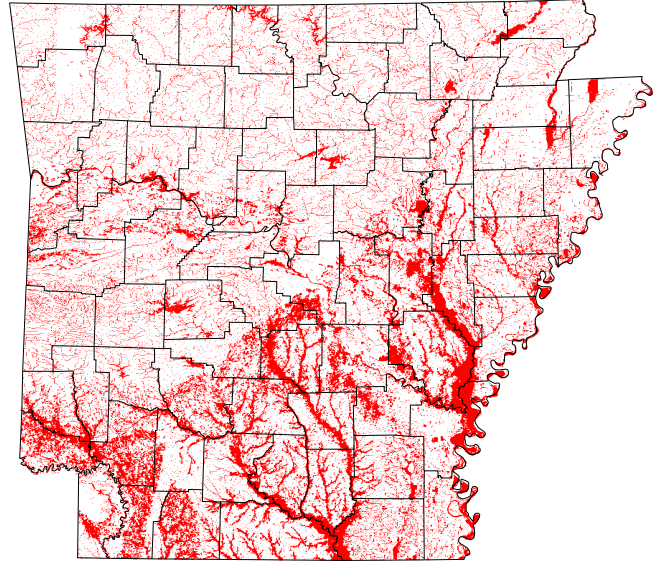


Breeding Distribution - Green treefrog



Breeding Habitat - Green treefrog



Habitat for Green treefrog

- Optimal Elm-ash-cottonwood
- Optimal Intermittent streams
- Optimal Large lakes
- Optimal Maple-beech-birch
- Optimal Oak-gum-cypress
- Optimal Perennial streams
- Optimal Small lakes

Legend for county range maps

- James & Neal (1986)
- Gap Avian Committee
- Hyatt & Moran (1990) or Neal & Mlodinow (1988)
- Predicted by Gap Avian Sub-Committee
- Predicted by Gap Avian Committee
- Sealander & Heidt (1990)
- Conant & Collins (1991)

Legend for habitat maps

- Optimal
- Suitable
- Marginal
- Caves

Model - Green treefrog

